



**Nº3 FORBURY PLACE**  
CAT A+ SUITES

[FORBURYPLACE.COM](http://FORBURYPLACE.COM)

## NO.3 FORBURY PLACE

Two remaining suites available of 2,868 sq.ft and 3,053 sq.ft across the 1st floor of No.3 Forbury Place.

Forbury Place has been developed with everything in mind for the modern business user, whether you are big or small. With the introduction of the new CAT A+ suites, No.3 Forbury Place, and the wider Forbury Estate, can offer even greater flexibility for all businesses. Each of the three stylish suites offer contemporary meeting rooms, breakout areas and desk space to suit everyone.

### **Suite B – 3,053 sq ft**

36 workstations, 1 x 10-person meeting room, kitchen/breakout area

### **Suite C - 2,868 sq ft**

30 workstations, 1 x 10-person meeting room, kitchen/breakout area





FOR  
FULLY FITTED  
SUITES







A modern office kitchen or break area featuring a long, white, rectangular table with black metal legs. Several black metal stools with green cushioned seats are tucked under the table. In the background, there is a dark grey wall with a long wooden shelf and a row of white spherical pendant lights. The ceiling has a grid of square acoustic tiles with recessed lighting. A small potted plant is visible on the left side of the frame.

# FOR LUNCHING





# FOR LOUNGING










B |



A modern office interior featuring collaborative workspaces. The space includes several wooden tables with black metal frames, each accompanied by a built-in wooden bench with a grey cushion. The walls are a mix of light wood paneling and dark grey acoustic panels. Two pendant lights hang over the first table. The floor is made of light-colored wood. In the background, there's a glass-walled area and a small black table. The text "FOR COLLABORATING" is overlaid in the center, with "FOR" on the top line and "COLLABORATING" on the bottom line. The letters are blue with a white geometric pattern inside.

FOR  
COLLABORATING







A modern office interior featuring a large glass-walled meeting room with a wooden floor and a ceiling with square light fixtures. Outside the glass, a hallway with a wooden slat wall and a row of potted plants is visible. The text "FOR PITCHING" is overlaid in the center.

FOR  
PITCHING











FOR

2,868 OR

3,053

SOFT



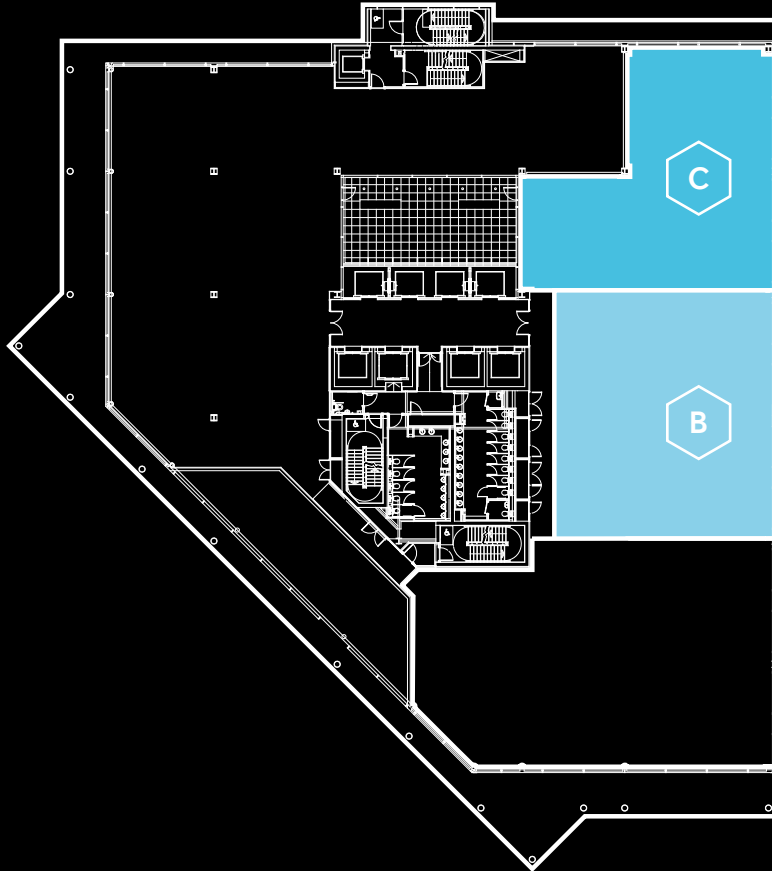


## FLOOR 1 - CAT A+ SUITES

5,921 sq ft / 550 sq m

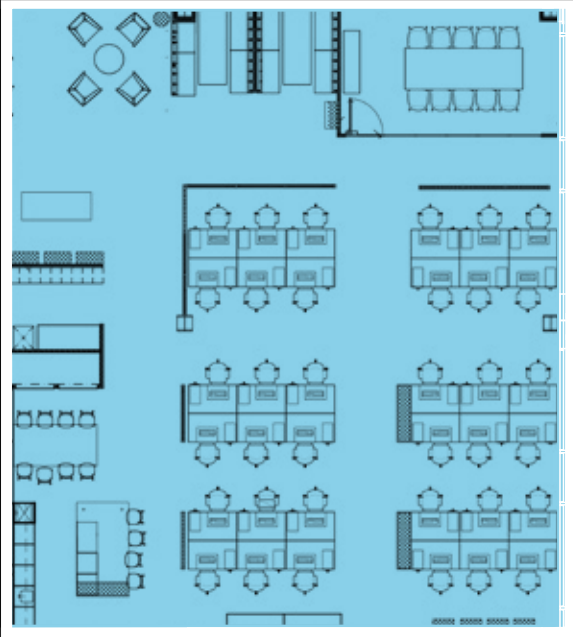
Suite B – 3,053 sq ft / 283 sq m

Suite C – 2,868 sq ft / 263 sq m



1B

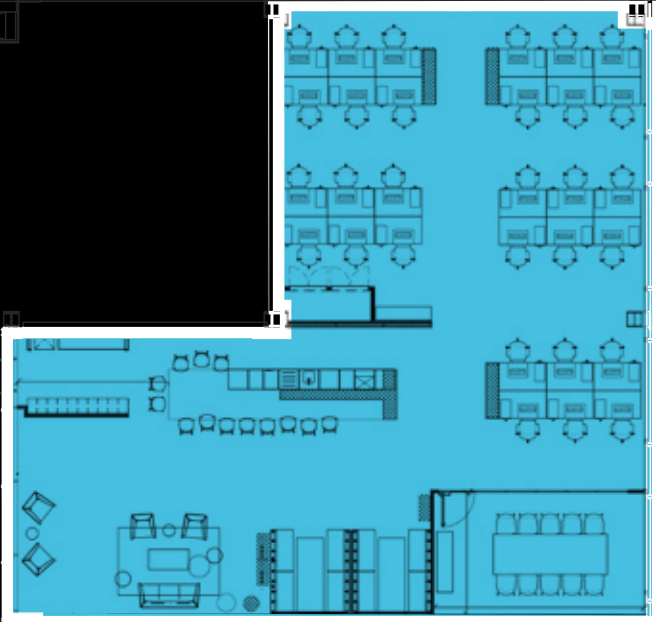
3,053 sq ft / 283 sq m



Suite B – Space Plan

1C

2,868 sq ft / 263 sq m



Suite C - Space Plan





## SPECIFICATION

- Onsite car-parking
- BREEAM Rating 'Excellent'
- EPC Rating 'C'
- 4 pipe fan coil air-conditioning
- Fully accessible raised floor with 150mm void
- Suspended metal tile ceiling
- 2.75m finished floor to ceiling height
- LED lighting
- Full height covered atrium
- Male, female and disabled WCs on each floor
- Showers and changing facilities
- Extensive cycle storage facilities
- On-site café, Forbury Kitchen

## FOR MORE INFORMATION

To find out more about the options at Forbury Place,  
or to discuss the requirements of your business please  
contact one of our agents below.

**CAMPBELL  
GORDON**

**Rob Marson**

M / +44 (0)777 846 7781  
T / +44 (0)118 959 7555  
E / [rob@campbellgordon.co.uk](mailto:rob@campbellgordon.co.uk)

**Fergus Haig**

M / +44 (0)755 314 1137  
T / +44 (0)118 959 7555  
E / [fergus@campbellgordon.co.uk](mailto:fergus@campbellgordon.co.uk)

**Website**

[www.campbellgordon.co.uk](http://www.campbellgordon.co.uk)

**CBRE**

**Matt Willcock**

M / +44 (0)792 011 7257  
T / +44 (0)20 7182 2000  
E / [matt.willcock@cbre.com](mailto:matt.willcock@cbre.com)

**Peter York**

M / +44 (0)788 073 7182  
T / +44 (0)20 7182 2000  
E / [peter.york@cbre.com](mailto:peter.york@cbre.com)

**Dom Clarke**

M / +44 (0)776 672 1036  
T / +44 (0)20 7182 2142  
E / [dom.clarke@cbre.com](mailto:dom.clarke@cbre.com)

**Website**

[www.cbre.com](http://www.cbre.com)

A development by

 **M&G**  
Real Estate

**Design**

[blast.co.uk](http://blast.co.uk)



