



Nº3 FORBURY PLACE
CAT A+ SUITES

[FORBURYPLACE.COM](https://forburyplace.com)

NO.3 FORBURY PLACE

Three suites available ranging from 2,868 – 4,566 sq ft across the 1st floor of No.3 Forbury Place.

Forbury Place has been developed with everything in mind for the modern business user, whether you are big or small. With the introduction of the new CAT A+ suites, No.3 Forbury Place, and the wider Forbury Estate, can offer even greater flexibility for all businesses. Each of the three stylish suites offer contemporary meeting rooms, breakout areas and desk space to suit everyone.

Suite A – 4,566 sq ft

52 workstations, 1 x 10-person meeting room, 1 x 6-person meeting room, kitchen/breakout area

Suite B – 3,053 sq ft

36 workstations, 1 x 10-person meeting room, kitchen/breakout area

Suite C – 2,868 sq ft

30 workstations, 1 x 10-person meeting room, kitchen/breakout area

FOR
FULLY FITTED
SUITES



A modern office kitchen or break area featuring a long, white, rectangular table with black metal legs. Several black metal stools with green cushioned seats are tucked under the table. In the background, there is a dark grey kitchen unit with a white countertop and open shelving. A series of white, spherical pendant lights hang from the ceiling. The floor is made of light-colored tiles. A small potted plant is visible on the left side of the frame.

FOR LUNCHING




FOR LOUNGING







B |



FOR COLLABORATING

The image shows a modern office interior with a focus on collaborative workspaces. In the foreground, there is a long, light-colored wooden table with a black metal frame. Underneath the table, there are several built-in wooden benches with grey upholstered cushions. The walls are made of light-colored wood panels, and the ceiling has exposed wooden beams. Two pendant lights hang from the ceiling. In the background, there is a glass-walled room and a small black table with a white top. The floor is made of light-colored wood. The text 'FOR COLLABORATING' is overlaid in the center of the image in a large, blue, stylized font with a white outline and a pattern of small dots.



FOR
PITCHING





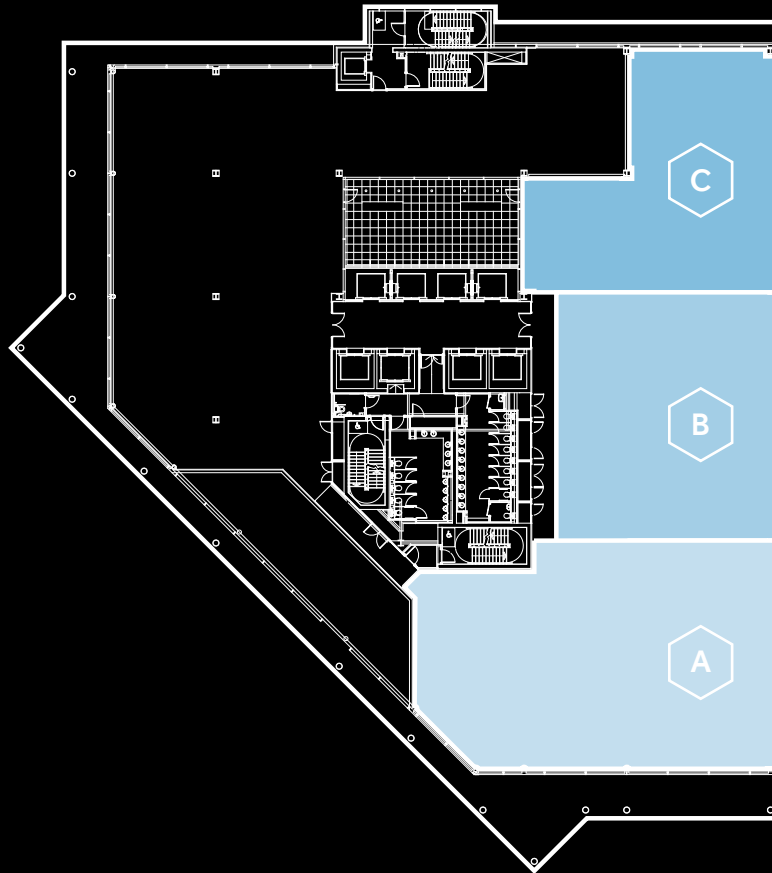


FOR

2, 3 6 8 T O

4, 5 6 6

S Q F T



FLOOR 1 - CAT A+ SUITES

10,487 sq ft / 965 sq m

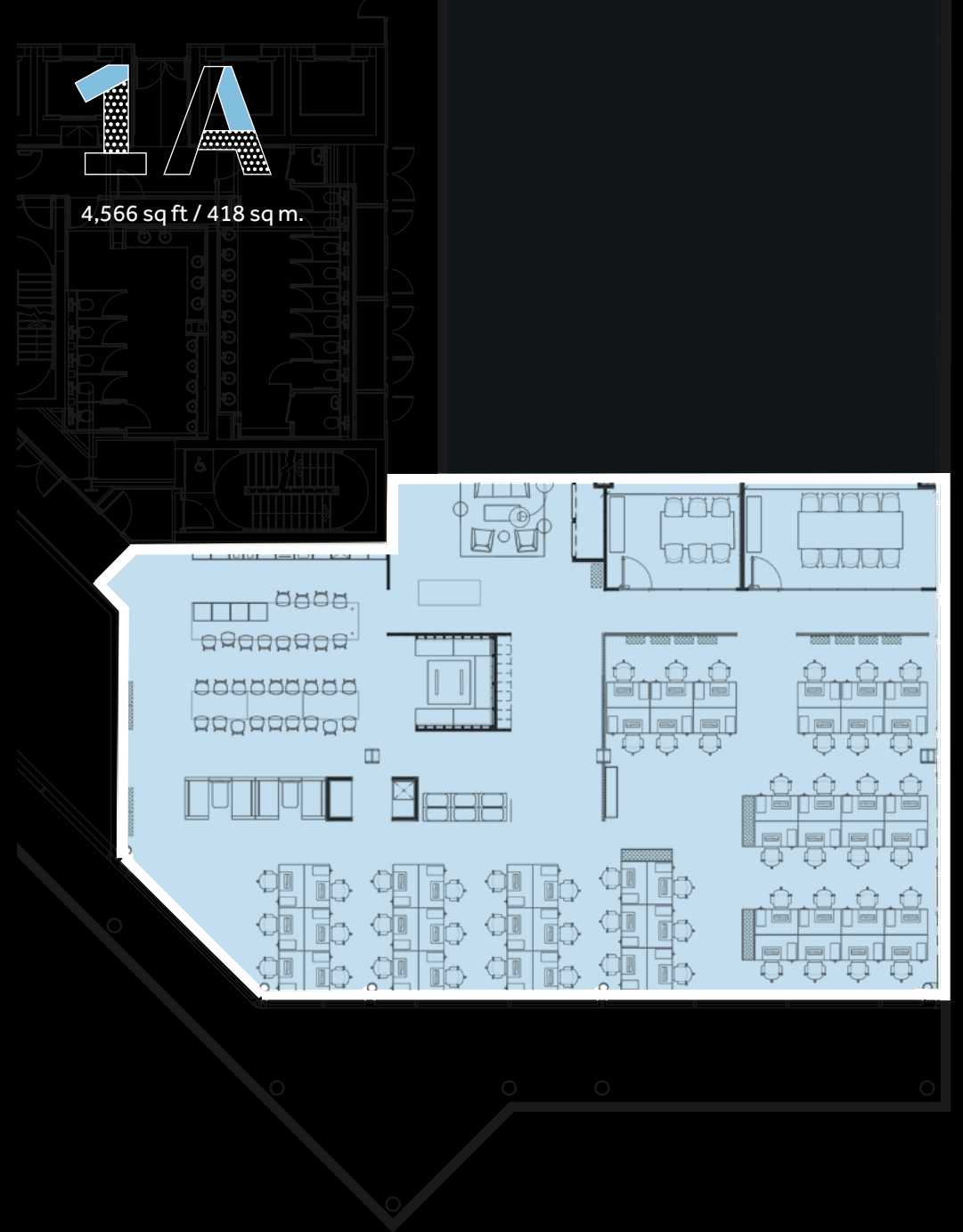
Suite A – 4,566 sq ft / 418 sq m

Suite B – 3,053 sq ft / 283 sq m

Suite C – 2,868 sq ft / 263 sq m



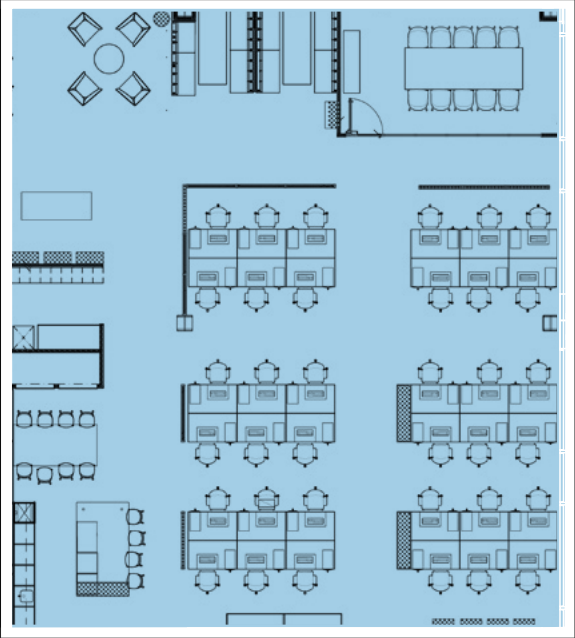
4,566 sq ft / 418 sq m.



Suite A – Space Plan

1B

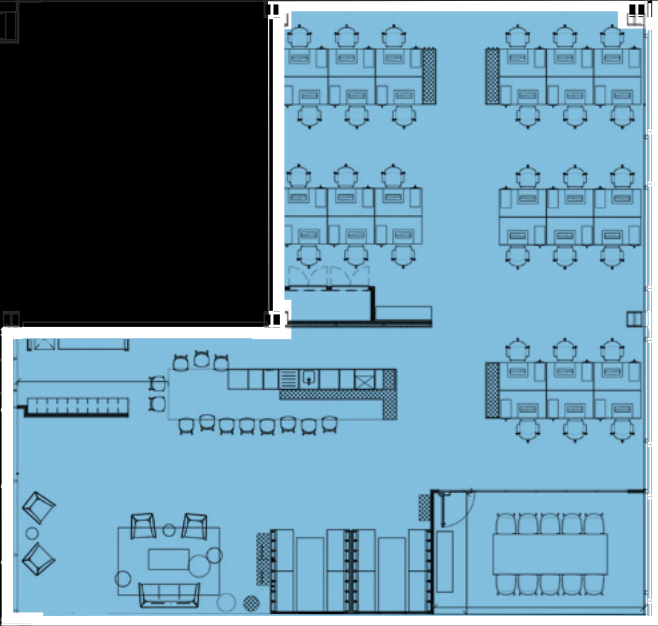
3,053 sq ft / 283 sq m



Suite B – Space Plan

1C

2,868 sq ft / 263 sq m



Suite C - Space Plan



SPECIFICATION

- Onsite car-parking
- BREEAM Rating 'Excellent'
- EPC Rating 'C'
- 4 pipe fan coil air-conditioning
- Fully accessible raised floor with 150mm void
- Suspended metal tile ceiling
- 2.75m finished floor to ceiling height
- LED lighting
- Full height covered atrium
- Male, female and disabled WCs on each floor
- Showers and changing facilities
- Extensive cycle storage facilities
- On-site café, Forbury Kitchen

FOR MORE INFORMATION

To find out more about the options at Forbury Place,
or to discuss the requirements of your business please
contact one of our agents below.

**CAMPBELL
GORDON**

Keith Wise

M / +44 (0)780 294 6166
T / +44 (0)118 959 7555
E / keith@campbellgordon.co.uk

Rob Marson

M / +44 (0)777 846 7781
T / +44 (0)118 959 7555
E / rob@campbellgordon.co.uk

Website

www.campbellgordon.co.uk

CBRE

Matt Willcock

M / +44 (0)792 011 7257
T / +44 (0)20 7182 2000
E / matt.willcock@cbre.com

Peter York

M / +44 (0)788 073 7182
T / +44 (0)20 7182 2000
E / peter.york@cbre.com

Dom Clarke

M / +44 (0)776 672 1036
T / +44 (0)20 7182 2142
E / dom.clarke@cbre.com

Website

www.cbre.com

A development by

 **M&G**
Real Estate

Design

blast.co.uk

