



**Nº3 FORBURY PLACE**  
FOR SPACE

[FORBURYPLACE.COM](http://FORBURYPLACE.COM)







# Nº.3 FORBURY PLACE









FOR A  
WARM  
WELCOME









#### FOR WORKPLACE DESIGN

At No.3 Forbury Place the welcoming hotel-style reception is a thoughtfully designed space featuring multiple 'touch down' areas in which to meet and greet your guests. The adjoining Forbury Kitchen serves the wider Forbury Estate, and is the ideal place in which to grab your morning coffee and enjoy informal lunches or snacks throughout the day.

The central atrium provides abundant natural light, for a modern workplace aesthetic. The building is served by eight passenger lifts which provide access to ten floors of flexible Grade A office space, from smaller fitted and furnished suites on the 1st floor, to a large open plan space on the 10th floor. An excellent range of amenities includes ample showers and changing facilities on the ground floor – perfect for your two-wheeled commute or lunchtime run. On the top floor you'll discover some of the most inspiring office views in Reading.





FOR HIGH  
ASPIRATIONS







### Espresso

Starbucks Espresso Roast is 100% Arabica Coffee

	1st	grande	vnt
Caffè Latte	1.75	2.00	2.25
Cappuccino	1.75	2.00	2.25
Caffè Mocha	2.25	2.50	2.75
Caramel Macchiato	2.25	2.50	2.75
Caffè Americano	1.50	1.75	2.00

Espresso espresso

	1.50	1.75
--	------	------

### Tazo® Tea

Tazo® Teas	1.30	1.40	1.60
Tazo® Chai Tea Latte	2.35	2.60	2.85

### Chocolate

Classic Hot Chocolate	2.25	2.50	2.75
-----------------------	------	------	------

Choose your

MILK    any size

COFFEE    Add Espresso Shot Size

EXTRAS    Add Flavored Syrup, Add Whipped Cream, Add Cream or Milk Size

### Iced

Iced Tazo® Tea	2.10	2.35
Iced Tazo® Chai Tea Latte	2.10	2.35

### Frappuccino®

Nonfat/Reduced Fat

Caramel	2.45	2.65
Coffee	2.45	2.65
Chocolate <small>or vanilla coffee</small>		
Strawberries and Cream	2.90	3.15

A passion for  
blending and roasting  
in every cup.





FOR  
LUNCH  
SNACKS  
& COFFEE





# FOR TIME OUT





FOR  
2,800 TO  
12,500  
SQFT





FOR CURRENT OCCUPIERS & AVAILABILITY

No.3 Forbury Place is the most well-established building in the Forbury Estate, and home to a connected community of industry leading companies. From PWC and Osborne Clarke, to IQVIA, ConvaTec, Yell, Pegasystems, Coupa Software, BPP & Posh, it's a prestigious environment in which to shape your future.

There are three available suites offering Grade A office accommodation at No.3, from 2,800 sq ft up to a total of 12,500 sq ft.

Two are fully fitted CAT A+ suites featuring workstations, kitchens, break-out areas and meeting rooms.





FOR  
YOUR  
OWN  
SPACE



FOR  
FULLY FITTED  
SITES









# FOR LUNCHING









# FOR LOUNGING











B |



FOR  
COLLABORATING





# FOR PITCHING





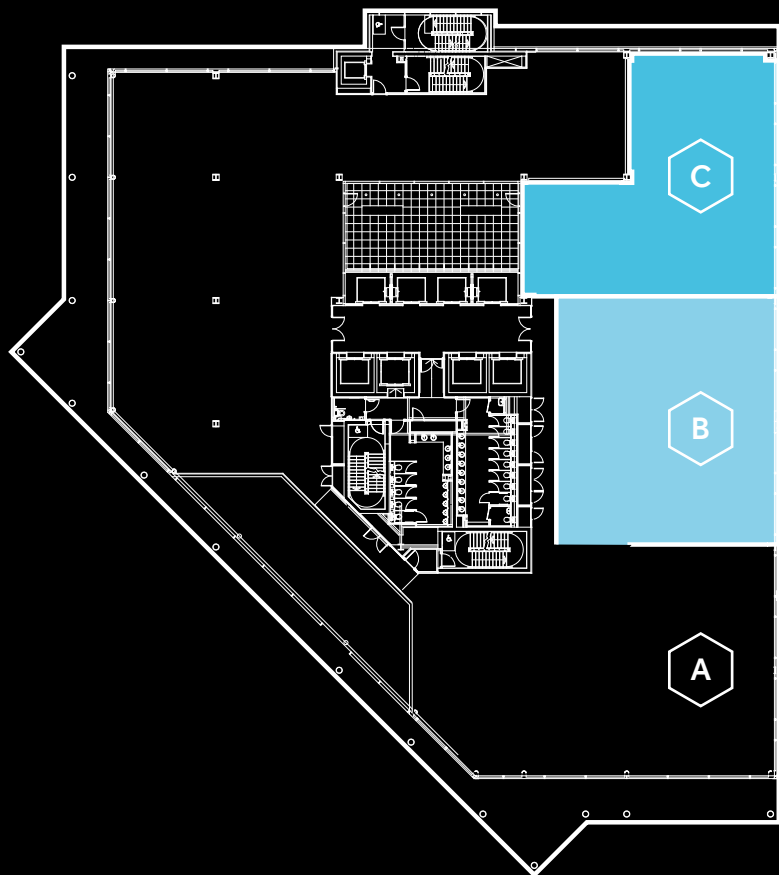








1

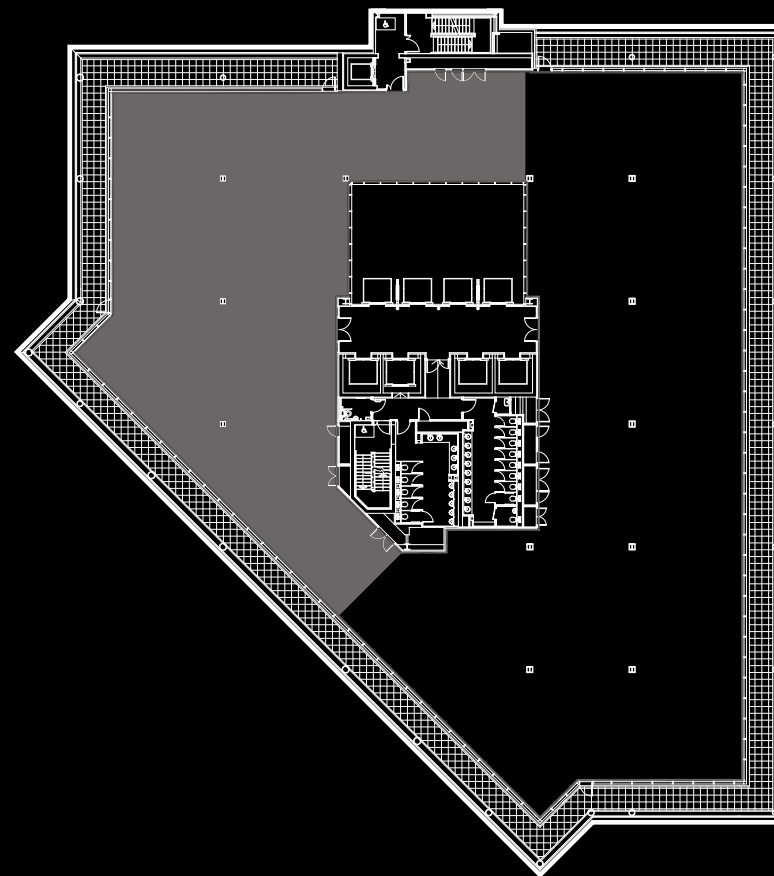


FLOOR 1 - CAT A+ SUITES

5,921 sq ft / 550 sq m

Suite B – 3,053 sq ft / 283 sq m  
Suite C – 2,868 sq ft / 263 sq m

10



FLOOR 10

6,656 sq ft / 618 sq m



CURRENT NO.3 FORBURY  
PLACE OCCUPIERS'

OSBORNE  
CLARKE  
YELL  
PEGASYS  
CONVATEC  
PWC  
BPP  
COUPA  
SOFTWARE  
POSH







## SPECIFICATION

- Onsite car-parking
- BREEAM Rating 'Excellent'
- EPC Rating 'C'
- 4 pipe fan coil air-conditioning
- Fully accessible raised floor with 150mm void
- Suspended metal tile ceiling
- 2.75m finished floor to ceiling height
- LED lighting
- Full height covered atrium
- Male, female and disabled WCs on each floor
- Showers and changing facilities
- Extensive cycle storage facilities
- On-site café, Forbury Kitchen



## FOR MORE INFORMATION

To find out more about the options at Forbury Place,  
or to discuss the requirements of your business please  
contact one of our agents below.

**CAMPBELL  
GORDON**

### Rob Marson

M / +44 (0)777 846 7781  
T / +44 (0)118 959 7555  
E / [rob@campbellgordon.co.uk](mailto:rob@campbellgordon.co.uk)

### Lewis Holmes

M / +44 (0)7767 204895  
T / +44(0)118 959 7555  
E / [lewis@campbellgordon.co.uk](mailto:lewis@campbellgordon.co.uk)

### Website

[www.campbellgordon.co.uk](http://www.campbellgordon.co.uk)

**CBRE**

### Matt Willcock

M / +44 (0)792 011 7257  
T / +44 (0)20 7182 2000  
E / [matt.willcock@cbre.com](mailto:matt.willcock@cbre.com)

### Peter York

M / +44 (0)788 073 7182  
T / +44 (0)20 7182 2000  
E / [peter.york@cbre.com](mailto:peter.york@cbre.com)

### Dom Clarke

M / +44 (0)776 672 1036  
T / +44 (0)20 7182 2142  
E / [dom.clarke@cbre.com](mailto:dom.clarke@cbre.com)

### Website

[www.cbre.com](http://www.cbre.com)

A development by

 **M&G**  
Real Estate

### Design

[blast.co.uk](http://blast.co.uk)



